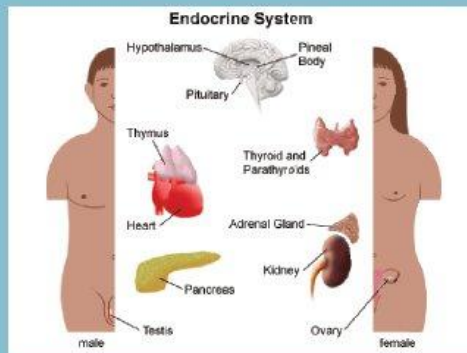


*The East Midlands  
Private  
Endocrine Centre*

*Thyroid  
Diabetes  
Pituitary*

*PCOS  
Hirsutism  
Weight Management*

*Endocrine Hypertension  
Endocrine disease*



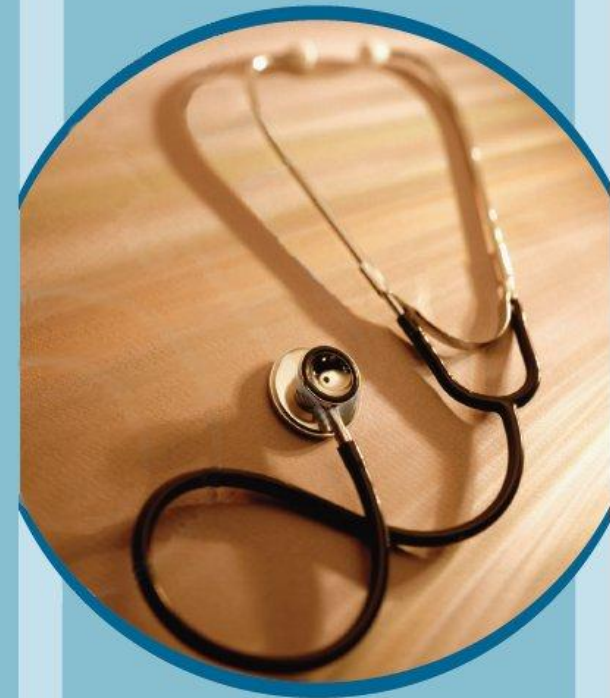
Practice Manager  
Niamh Maksoud

Communication officer  
Hayley Combe

Administrator  
Mrs Sue Ware

Nurses  
Sister Vicki Bateman  
C/N Tim Wakefield

Tel 0115 966 2137  
Fax 0115 954 1246  
maksoudn@gmail.com  
consultant-endocrine.com



Dr Hisham Maksoud  
MB BCh BAO  
LRCP&SI (NUI)  
FRCP Edin FRCP London  
FACE MD

Consultant in Endocrinology  
Diabetes - Internal Medicine

Information Leaflet

## **Our Purpose**

**The East Midlands Endocrine service is committed to providing quality patient care to our patients with endocrine related disorders. We are about patient care, safety and satisfaction, and recognise that integrity and ethical care are paramount in meeting the needs of our patients.**

**Diagnoses We Treat Including but not limited to:**

**Thyroid: Hyperthyroid, Hypothyroid, Goitre, Thyroid Nodule, Thyroid Cancer**

**Diabetes: DM- type 1 and 2, Metabolic Syndrome**

**Bone: Osteoporosis / Osteopenia, Hyperparathyroid, Vitamin D Deficiency**

**Pituitary: Pituitary Adenoma, Galactorrhea Hypopituitarism**

**Adrenal: Adrenal Adenoma, Endocrine Hypertension**

**Polycystic Ovarian Syndrome (PCOS), Low Testosterone**

## **Appointment and test results**

· Appointment ( New) All patients must have a referral from a general practitioner (GMC). Please fax 0115 954 1246.

· Appointment (Review) : Please email maksoudn@gmail.com or call 0115 966 2137. All calls will be returned within 24 hours. If you cannot keep your appointment please call or email as soon as possible.

· Please ensure you have your blood tests 2 weeks prior to your consultation appointment to ensure you have a valuable consultation

## **Billing**

For billing enquiries please contact Mrs Susan Ware your invoice manager ( 10 am – 3 pm) 0115 96 808 96

· Insured Patients : Please contact your insurance company and let them know our code 4146159 prior to consultation to obtain your authorisation number.

· Self pay Patients: Please discuss with Niamh regarding the option of direct debit to reduce your invoice costs (Tel 0115 966 2137).

## **Admission**

· The endocrine tests are important tests that challenge the endocrine system to examine whether the endocrine system is working correctly. These tests assess your endocrine system for pancreas, thyroid, growth hormone abnormality, pituitary, adrenal gland failure or excess secretion of steroid or insulin.

· Endocrine Admission: We provide extensive dynamic endocrine testing, MRI, CT, Xrays and Nuclear medicine. We have access to distinguished specialists in the field of endocrine surgery. All admissions are arranged in advance in writing following consultation.

· Medical admission: We provide extensive facilities including High Dependency Unit and MRI, CT Xrays and full complement of endocrine laboratories. We have access to respected specialists in the field of medicine and surgery to support your hospital stay.